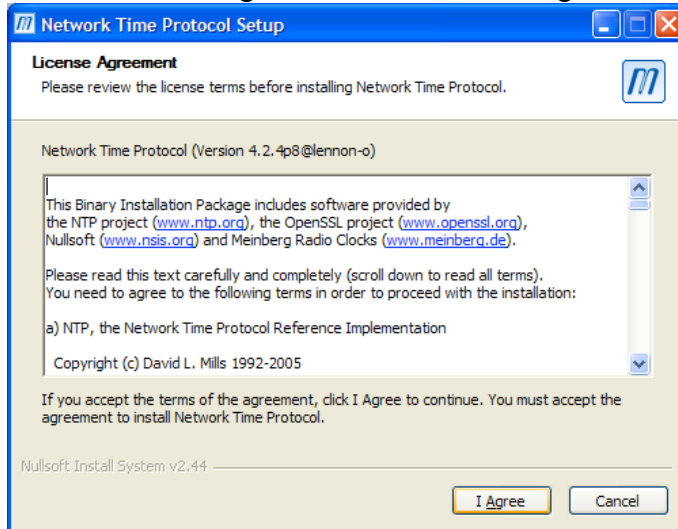


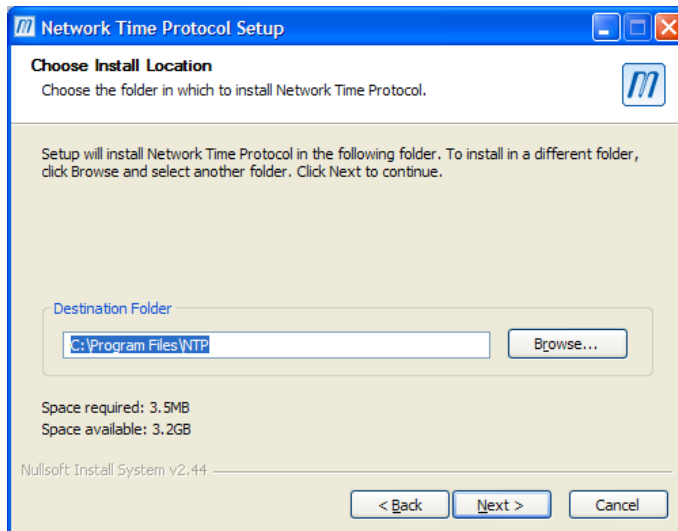
## INSTALLING NTP on Windows

To install NTP, download the latest version from:  
<http://www.meinberg.de/english/sw/ntp.htm>  
and choose to “Run” this after download.

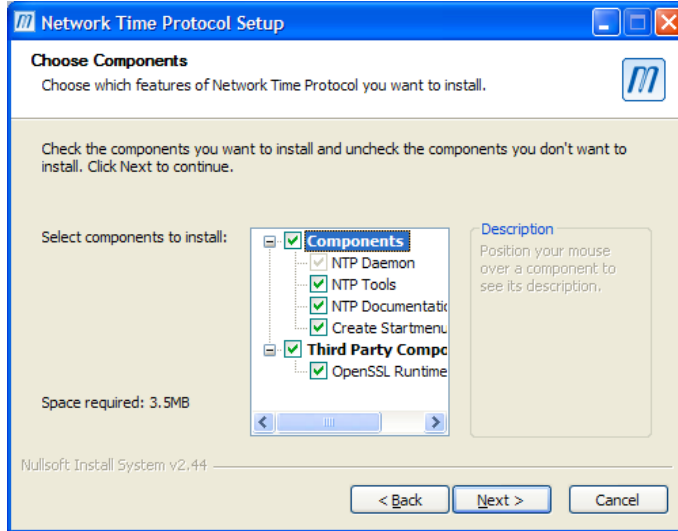
Read the license agreement and select “I Agree” to continue:



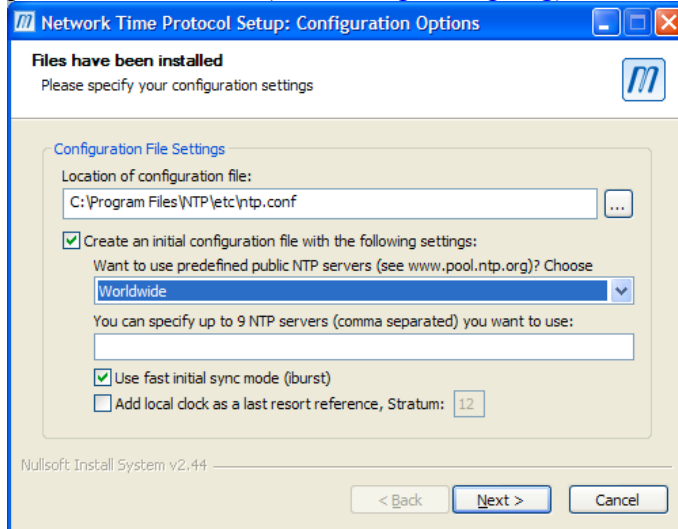
Click “Next”:



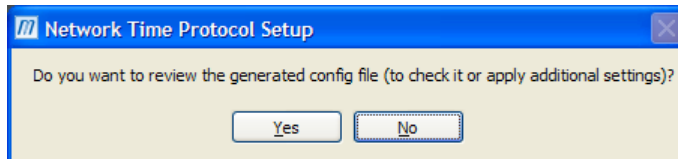
Click “Next”:



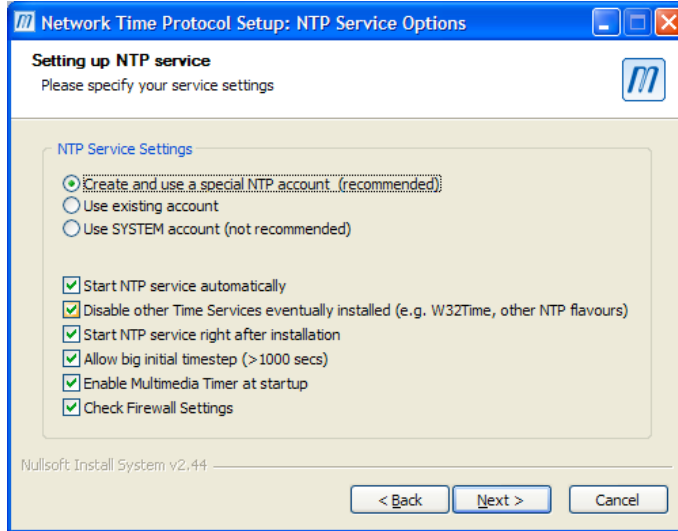
Choose “Worldwide” or alternatively your region for “Want to use predefined public NTP servers (see [www.pool.ntp.org](http://www.pool.ntp.org))?”. Then click “Next”:



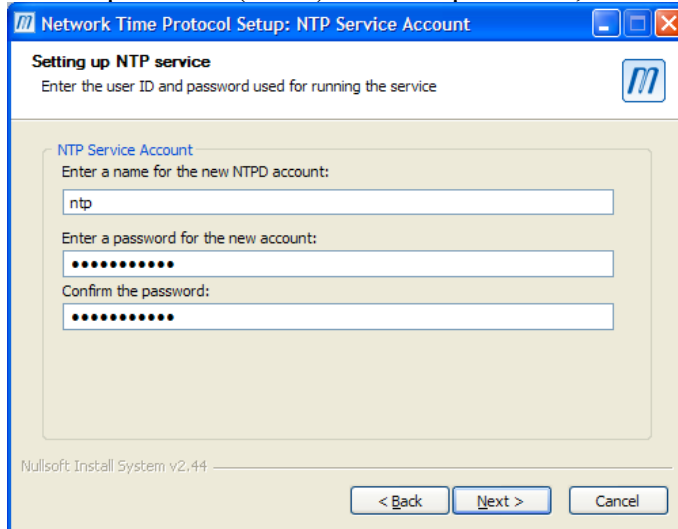
Click “No”:



Click “Next”:



Enter a password (twice) for the ntp account, click “Next”:



You are done! Click “Finish”.

